

# FEATURED PROJECTS

DESIGN SERVICES  
Interior Design ■ Planning ■ Procurement



## PROJECT NAME

Maplewood Park Place

## LOCATION

Bethesda, MD

## PRACTICE AREA

Senior Living

## CLIENT

Maplewood Park Place

## STATUS

Completed 2013

## SERVICES

Master Planning  
Interior Design  
Conceptual Design  
Procurement & Installation  
Construction Management  
Renovation

## PROGRAM

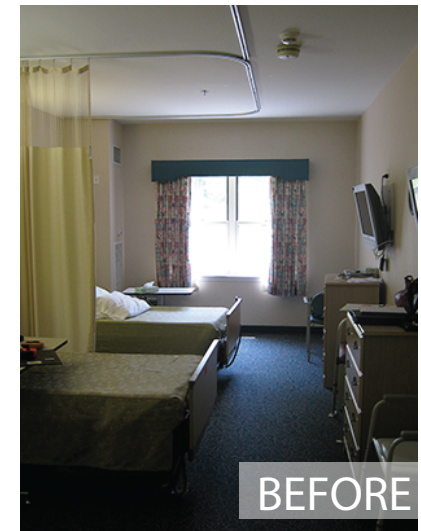
Maplewood Park Place is a CCRC located in Bethesda, MD and is comprised of 207 Independent Living condos, 21 Assisted Living suites and 31 Skilled Nursing beds. The community is resident-owned and managed by Sunrise Senior Living.

## GOALS/OBJECTIVES

To renovate the occupied Skilled Nursing units (15 double-occupancy, 1 single occupancy) to reflect a more residential atmosphere and improve the living space of each resident through the use of maintenance-friendly finishes and operator-friendly furnishings; To support the implementation of in-room medication dispersement and new electronic medical record keeping.

## PROTOTYPE

With buy-in from management, Design Services was able to bring all pertinent stakeholders (residents, family members, staff, and upper management) to the table at the very beginning. Through a process of interviews, product demonstrations, and sample reviews a prototype room was designed and implemented where residents and staff were encouraged to “kick the tires” and report back their impressions. With those valuable insights, the final design reflects a team approach that includes “lessons learned” and ultimately performance-based design.



# FEATURED PROJECTS

DESIGN SERVICES  
Interior Design ■ Planning ■ Procurement



## PROJECT NAME

Maplewood Park Place

## LOCATION

Bethesda, MD

## PRACTICE AREA

Senior Living

## CLIENT

Sunrise Senior Living

## STATUS

Completed 2013

## SERVICES

Master Planning  
Interior Design  
Conceptual Design  
Procurement & Installation  
Construction Management  
Renovation

## SOLUTIONS

Bed-side technology was introduced to allow control of the television, lighting, and nurse call notification from a single, easy to use, handheld device.

Custom furnishings were developed to meet the specific needs of the population. Among them, dressers with drop-leaf ends to provide additional surface area for pictures or flowers, motion-back chairs with nesting ottomans that allow residents to safely elevate their feet when needed and individual in-room medication cabinets with self-locking drawers that look like fine furniture.

The bathrooms were completely redesigned to improve accessibility and storage. Original casework with laundry bins, storage cubicles and display shelves increased storage capacity. Solid surface counter tops with cut outs for hand-holds near the toilet improved safety while supporting resident independence. Lighted grab bars, vanity illumination and a new night lights enhanced resident safety.

